



# Lower Bruckland Nature Reserve

## Welcome

Created in 1999, Lower Bruckland is a private nature reserve that is open to visitors between Spring and Autumn. Ongoing projects include English woodland creation, water vole recovery, butterfly conservation and wildflower introduction. During the summer months the area abounds with many dragonfly species. This tranquil space provides lovely walks amongst the lakes and young woodlands.



Above: Emperor Dragonfly



Above: Golden Ringed Dragonfly



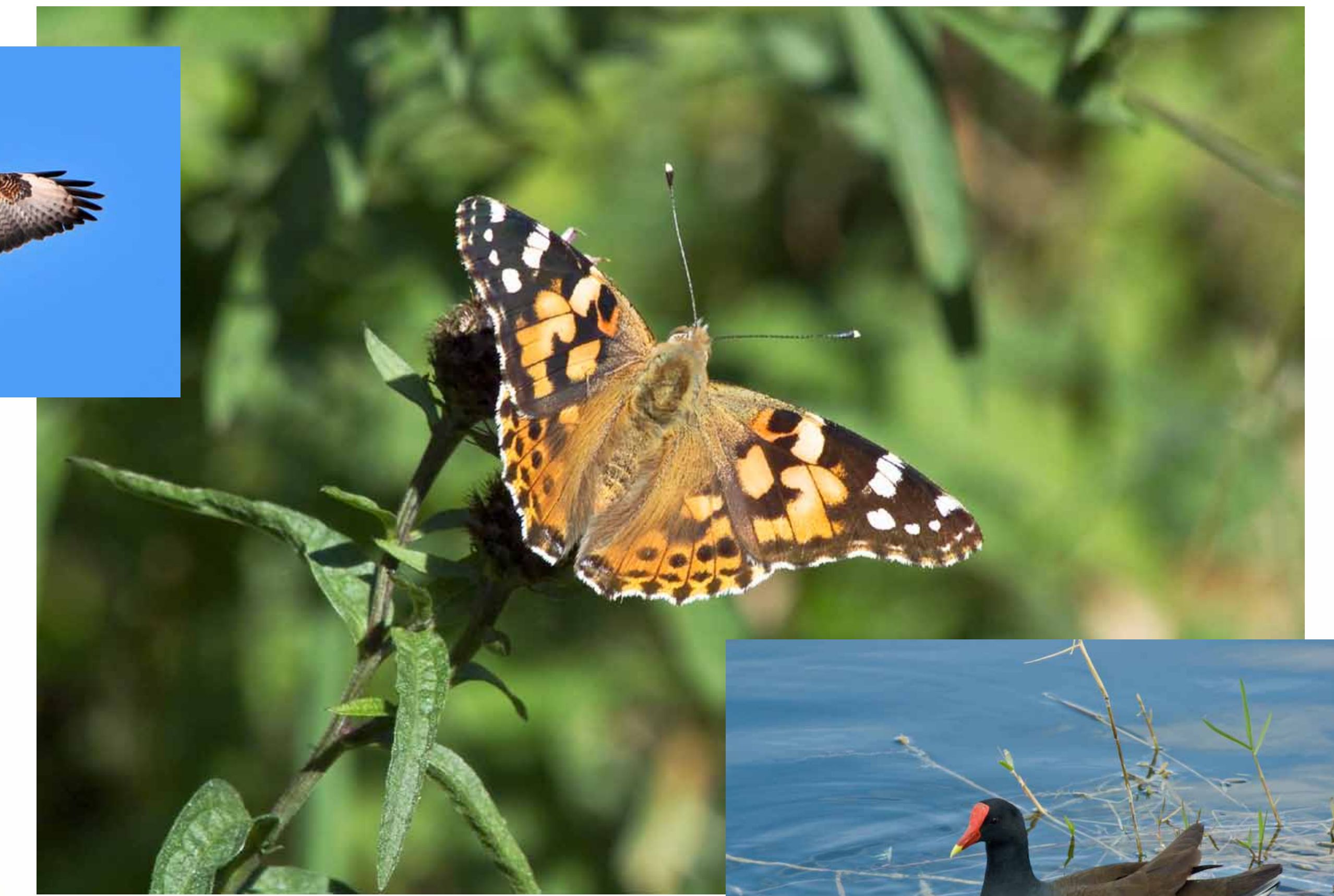
Above: Azure Damselfly



Above: Female common blue Damselfly



Above: Buzzard



Above: Painted Lady butterfly



Above Coot, (Moorhens have a white upper beak).

Below: Red Veined Darter



Below: Mallard



Below: Male Tufted Duck



Above: Barn Owl hunting for voles



Above: Dark bush cricket